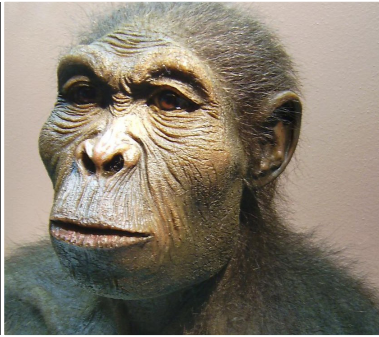


EARLY ANCESTORS IMAGE SORT (ANSWER KEY)



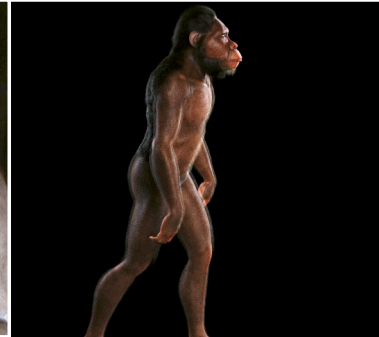
A. *Homo sapiens*



B. *Homo habilis*



C. Neanderthal



D. *Australopithecus*



E. *Homo erectus*

1. **D. Australopithecus:** Extinct hominine genus, closely related to humans, that existed in Africa from about 4 million years ago to 2 million years ago.

2. **B. Homo habilis:** Extinct hominine genus, closely related to humans, that existed in Africa from about 2 million years ago to 1.4 million years ago.

3. **E. Homo erectus:** Extinct hominine relatives of modern humans that lived in Africa about 2 million years ago; some left Africa and journeyed to Eurasia.

4. **C. Neanderthal:** Homo sapiens' closest extinct relatives, who lived concurrently with Homo sapiens and died out about 28,000 years ago.

5. **A. Homo sapiens:** Appeared about 200,000 years ago and is currently the final species in the evolutionary process of humans and the species to which all modern humans belong.

