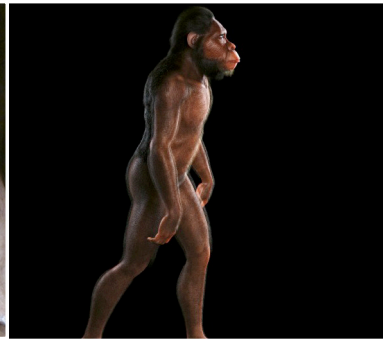
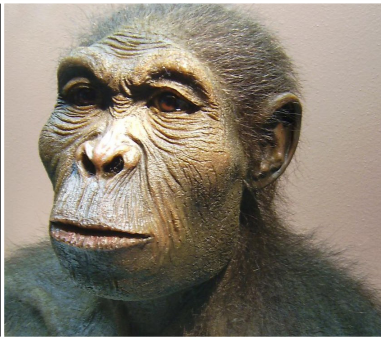


# EARLY ANCESTORS IMAGE SORT

**Directions:** Print the Early Ancestors Image Sort worksheet, which shows some of our early ancestors. Indicate the order of the images, from earliest ancestors to *Homo sapiens*, on the worksheet. At this point, you are not presumed to have any formal understanding of how humans have evolved. This activity provides an opportunity to start thinking about this process. This activity should be done quickly. After you have arranged the images, jot down everything you can that differentiates humans from our ancestors. Later in the lesson, you will have a chance to form a deeper understanding of how humans have evolved from our early ancestors, and to see how that compares with what you came up with here.



A. *Homo sapiens*

B. *Homo habilis*

C. *Neanderthal*

D. *Australopithecus*

E. *Homo erectus*

1.

2.

3.

4.

5.

